



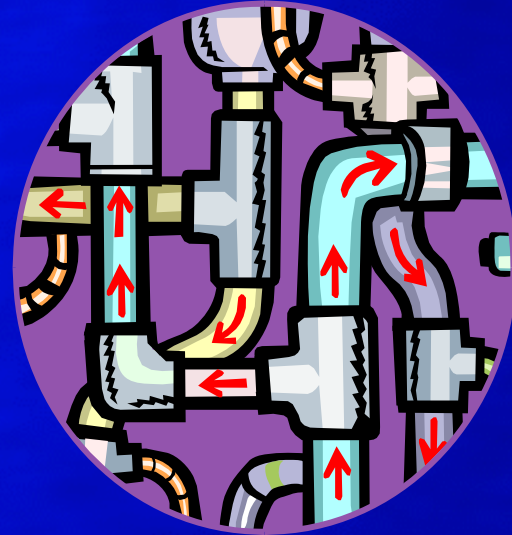
# American Backflow Prevention Association

And

Pagosa Area Water and Sanitation District

Presents

PROTECTING YOUR WATER  
AGAINST  
CONTAMINATION

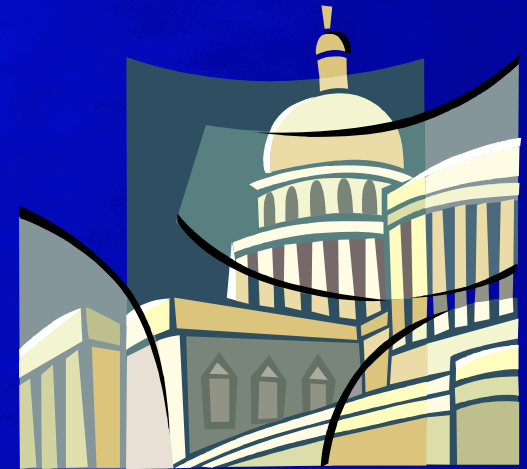




# American Backflow Prevention Association

## Your Drinking Water

- **Everyday, water suppliers provide millions of gallons of water to their citizens**
- **It has gone through careful treatment and numerous tests to ensure its quality**
- **It is government regulated and meets standards that exceed those for bottled water**





# American Backflow Prevention Association

## Safe Drinking Water Act

- Congress established the Safe Drinking Water Act (SDWA) in 1974
- This act and its amendments require many actions to protect drinking water and its sources.
- Without proper protection, backflow can occur.



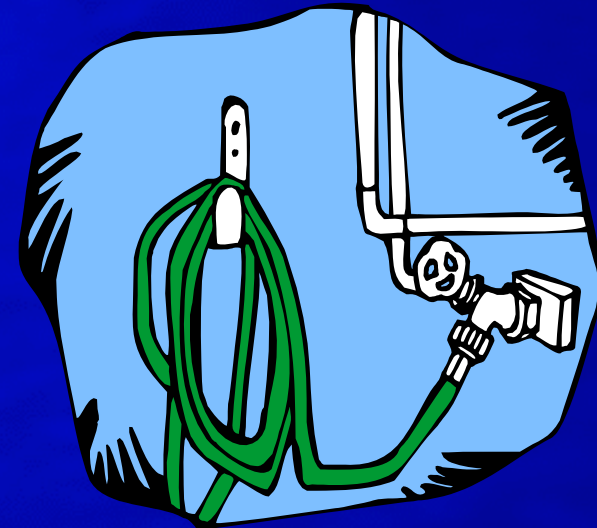


# American Backflow Prevention Association

## AN INTRODUCTION TO CROSS-CONNECTION CONTROL

### ● **What is *backflow*?**

Water distribution systems are designed with the intention of the water flowing in a certain direction from the distribution system to the consumer. However, hydraulic conditions within the system may deviate from the "normal" conditions, causing water to flow in the opposite direction. Therefore, it is possible (and common) for the water to flow in the opposite direction in unprotected systems. This is called backflow.





# American Backflow Prevention Association

- **What is a *cross-connection*?**

A cross-connection is an unprotected actual or potential connection between a potable water system used to supply water for drinking purposes and any source or system containing unapproved water or a substance that is not or cannot be approved as safe, wholesome, and potable. By-pass arrangements, jumper connections, removable sections, swivel or changeover devices, or other devices through which backflow could occur, shall be considered to be cross-connections.



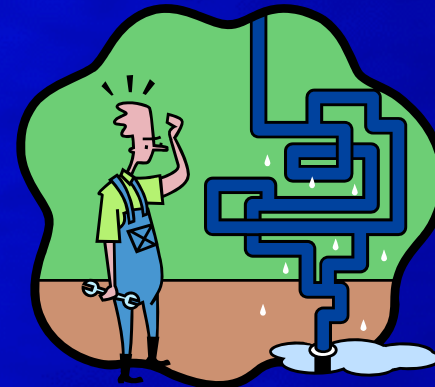
# American Backflow Prevention Association

## Backflow Prevention Assemblies

- **External (service containment)**
  - protect the main water supply



- **Internal (point of use)**
  - protect customer in their own systems

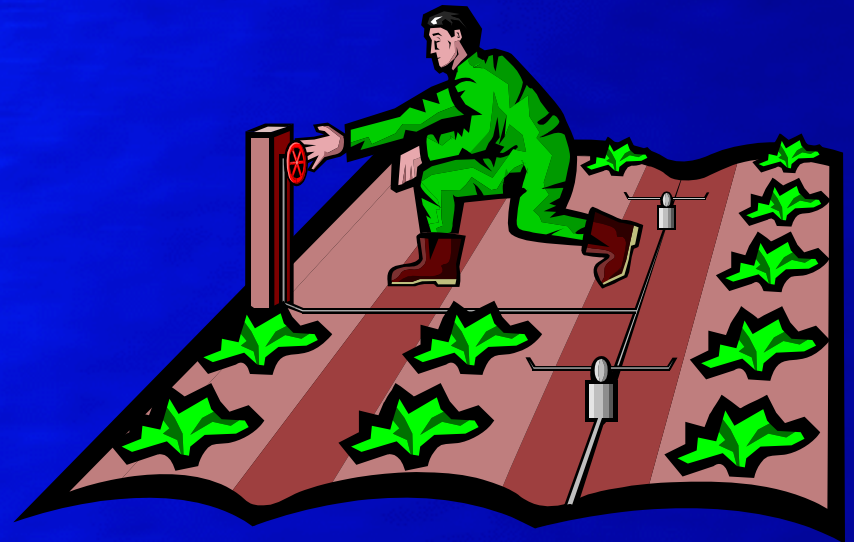




# American Backflow Prevention Association

## What is a potential hazard?

A potential hazard is a point in a plumbing system where the drinking water supply could be connected, or can be connected, to a non-drinking water source. Examples of potential cross connections are numerous commercial applications, outdoor hose faucets, irrigation sprinkler systems, swimming pools, boiler systems and fire sprinkler systems.

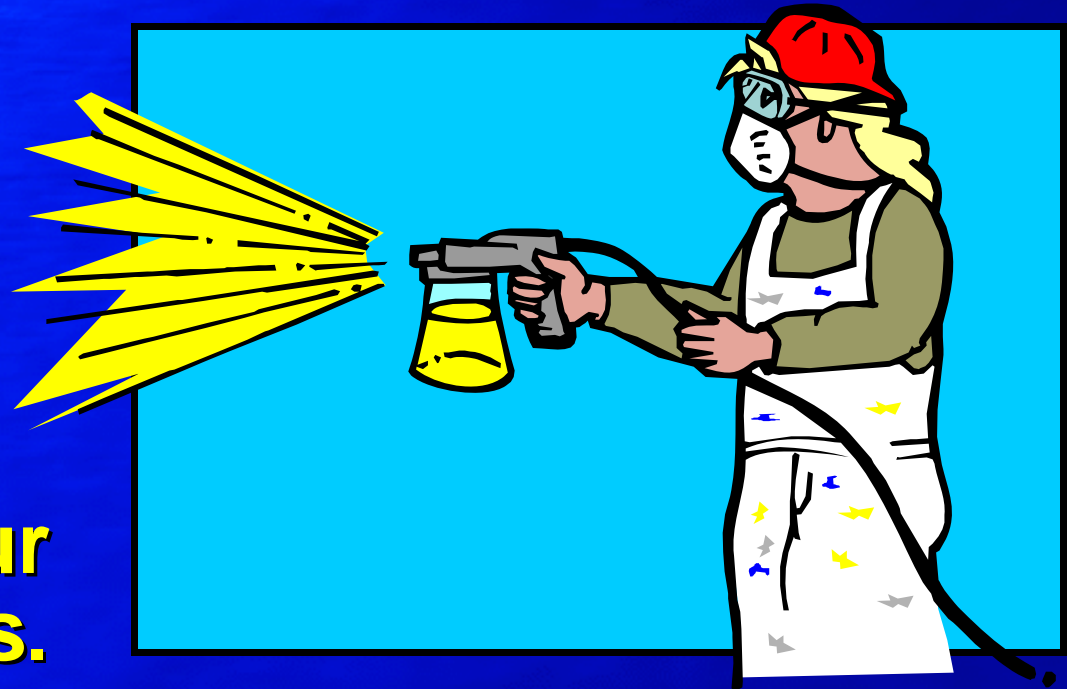




# American Backflow Prevention Association

## The Deadly Garden Hose

- Over half of the nation's cross connections involve unprotected garden hoses.
- Beware of your simple actions.





# American Backflow Prevention Association

**We are all responsible for protecting the safety of our drinking water supply.**

- **Protect the water at your business, on your property, or in your home.**
- **If you need information or have questions, call us at 970-731-2691**





# American Backflow Prevention Association and Pagosa Area Water and Sanitation District



970-731-2691

PO Drawer 4610

Pagosa Springs, CO 81157

**Working together to  
keep our water  
safe**